

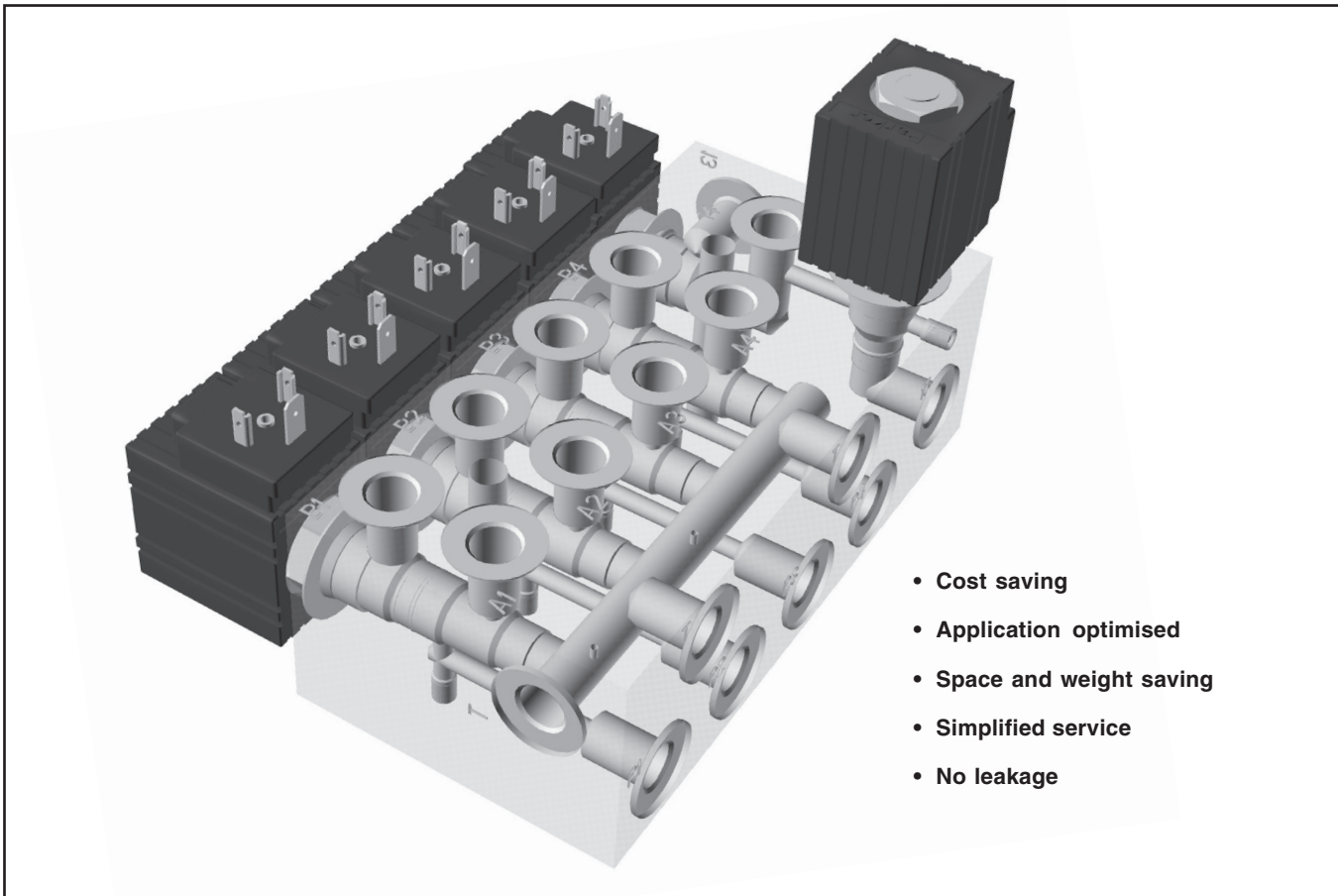


# *Integrated Hydraulic Circuit Series IHC*

---

*Catalogue HY17-8051/UK  
February 2001*





- **Cost saving**
- **Application optimised**
- **Space and weight saving**
- **Simplified service**
- **No leakage**

### **IHC Manifold (Integrated Hydraulic Circuit)**

Parker Mobile Controls Division makes a wide variety of special hydraulic manifolds for mobile applications.

Typically, a specially designed manifold replaces a combination of hard piped or hoses individual valve components. The overall manifold design takes into consideration the basic parameters of flow and pressure for each of the valve elements in the circuit. All cartridges, cross drillings and ports are sized and located correctly to optimise the performance of the designed manifold. Our engineers have many years of experience helping customers design complex, high performance hydraulic systems.

Engineering practice, CAD/CAM systems and specially designed test program insure the reliability and performance of the product.

Our experienced engineering staff can quickly design a manifold to meet the customer's needs. We have designed hundreds of manifolds for our key applications. We can also quickly and economically machine a manifold from the 3-D model using our CAD/CAM system and CNC machining centre.

### **Manifold Benefits**

- **Overall System Cost Savings**

An application optimised Manifold design gives lower initial cost plus lifetime cost savings for your application from purchasing to service and after sales.

- **Optimised System Performance**

Cartridges and flanged valves work properly when integrated together within design parameters.

- **Ease of Application**

The design with valves, and ports placed where you need them to simplify engineering of installation and service in the field.

- **Fewer Potential Leak Points**

Reduces internal and external leakage.

- **Fewer fittings and hoses**

Reduced plumbing, material and labour costs.

- **Fewer Parts**

Reduces purchasing and stock cost.

- **The compact design**

Save space and weight.

- **Simplified Service Procedure**

Allows replacement of parts without removing plumbing and a short breakdown time.

- **Greater Reliability of Overall System**

Reduces the breakdown times and chances of contamination.

### **The Strength of Parker Hannifin**

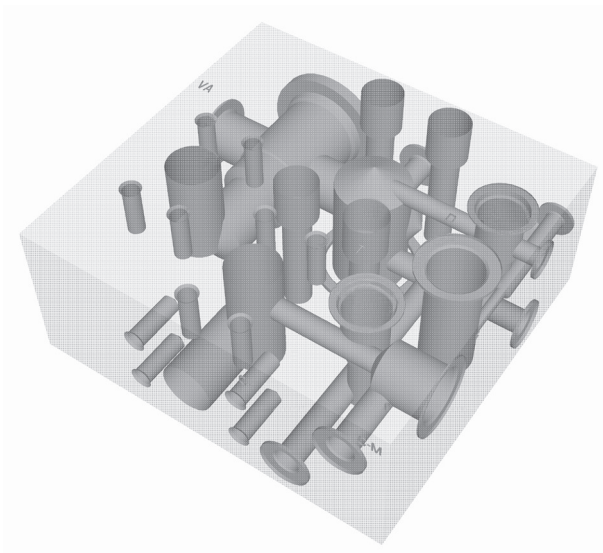
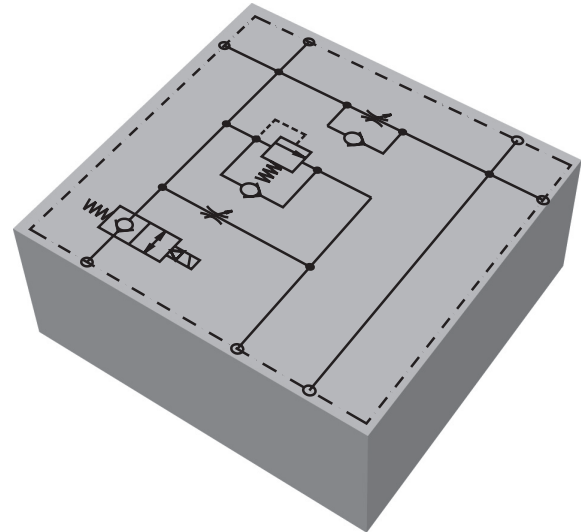
- Global sales coverage.
- ISO 9000 certificate.
- IHC teams.
- Application knowledge.
- Total system capability.
- Complete product mix.
- Design in 3-D.
- Complete process from design to tested IHC.

## Development process

### Design

From your basic data such as pressure, flows and port locations we will generate pricing and circuit proposals.

Highly qualified personnel will create a 3-D model in our computers. After your approval of pricing, circuit and model we are ready for prototyping.



### Prototype

From the approved 3-D model that was created in Pro/Engineer we will in the next step transform it into a machining code and it will be produced exactly as the computerised model.

The different parts will be assembled and tested against a test procedure.

The final testing and approval will take place by the customer.

### Serial production

After the final testing and approval all documents will be approved and serial production can take place.

